

Homeostasis in mammals

Question Paper 1

Level	International A Level
Subject	Biology
Exam Board	CIE
Topic	Homeostasis
Sub Topic	Homeostasis in mammals
Booklet	Theory
Paper Type	Question Paper 1

Time Allowed : 66 minutes

Score : / 55

Percentage : /100

Grade Boundaries:

A*	A	B	C	D	E	U
>85%	'77.5%	70%	62.5%	57.5%	45%	<45%

1 (a) In mammals, the water potential of the blood is constantly monitored by osmoreceptor cells in the hypothalamus of the brain. When the water potential of the blood decreases, ADH (antidiuretic hormone) is produced by cells in the hypothalamus and released into the blood via an endocrine gland.

(i) Explain what is meant by the term *water potential*.

.....
.....
.....[1]

(ii) Describe the effect on water potential of adding solute to a solution.

.....
.....[1]

(iii) State precisely where ADH is released into the blood.

.....[1]

(iv) The decrease in the water potential of the blood is sometimes due to the loss of water from the body of a mammal.

List **two** ways by which water may be lost from the body.

.....
.....[1]

Save My Exams! – The Home of Revision

For more awesome GCSE and A level resources, visit us at www.savemyexams.co.uk/

A series of horizontal dotted lines for writing.

Save My Exams! – The Home of Revision

For more awesome GCSE and A level resources, visit us at www.savemyexams.co.uk/

A series of horizontal dotted lines for writing.

Save My Exams! – The Home of Revision

For more awesome GCSE and A level resources, visit us at www.savemyexams.co.uk/

A series of horizontal dotted lines for writing, consisting of 30 lines spaced evenly down the page.

Save My Exams! – The Home of Revision

For more awesome GCSE and A level resources, visit us at www.savemyexams.co.uk/

A series of horizontal dotted lines for writing.

5 Fig. 2.1 is a light micrograph of a small part of the pancreas.

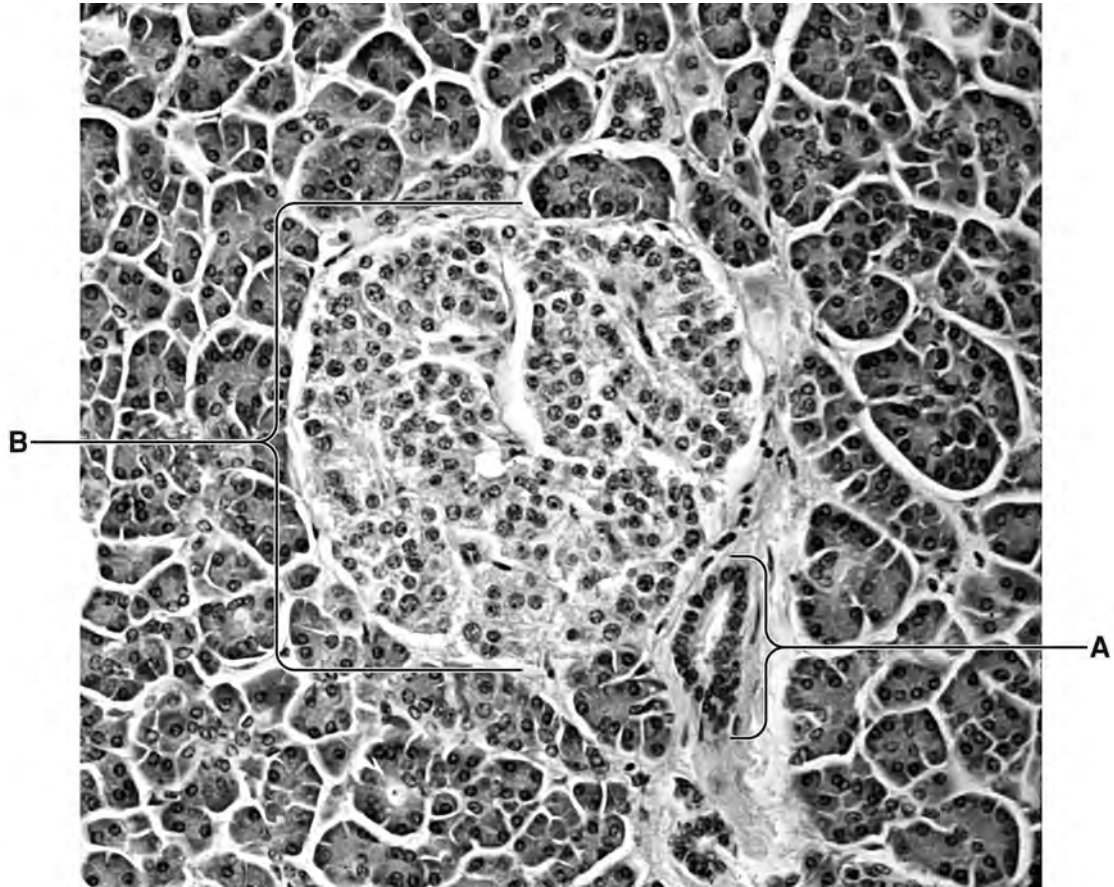


Fig. 2.1

(a) Name structures **A** and **B**.

A

B [2]

(b) With reference to Fig. 2.1, explain why the pancreas is an *endocrine gland*.

.....

.....

..... [2]

- (c) Insulin and glucagon are involved in the control of blood glucose concentration. When blood glucose concentration rises, secretion of insulin increases.

Outline two ways in which insulin affects the activity of cells in the liver.

1.
.....
2.
..... [2]

- (d) Some forms of diabetes are caused by an inability to secrete insulin and can be controlled by regular injections of insulin. Most of this insulin is now produced using genetically modified *Escherichia coli*.

Explain the advantages of using this type of insulin, rather than insulin obtained from animal sources.

-
.....
.....
..... [2]

[Total: 8]